

Installation and user's guide

**MULTICAL® 403**



# User Guide

## Energy measurement

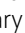

MULTICAL® 403 functions as follows:

**The flow sensor** registers the quantity of water which circulates through the system in cubic metres (m<sup>3</sup>).

**The temperature sensors** mounted in inlet and outlet pipes register the cooling, i.e. the difference between inlet and outlet temperatures.

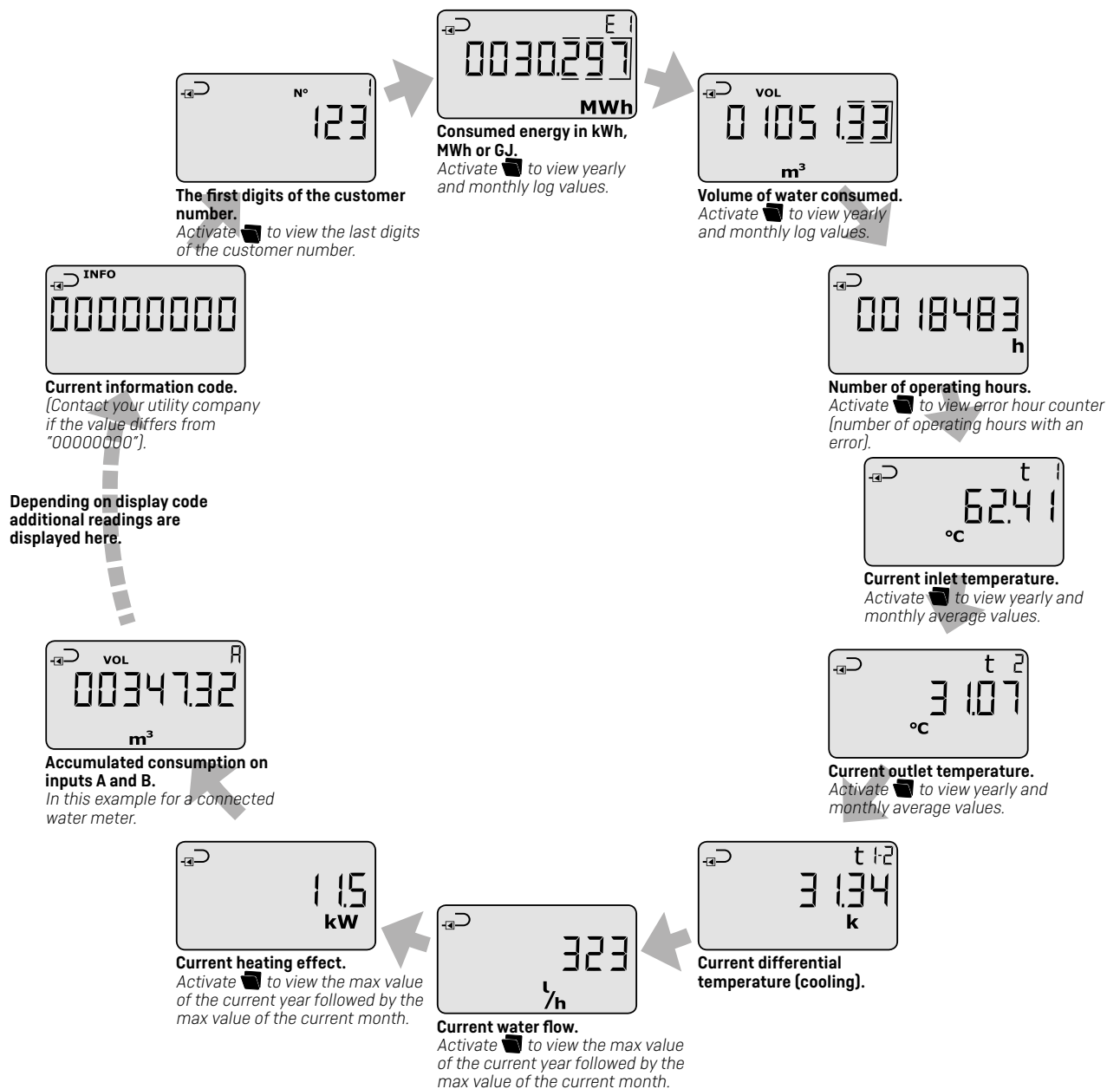
**MULTICAL® 403** calculates energy consumption on the basis of volume of water and temperature difference.

## Readings in the display

When the primary key  is activated, a new primary reading is displayed. The secondary key  is used to display historical readings and average values.

Four minutes after the latest activation of any front key, reading automatically changes to consumed energy.

## Display readings



Display readings are based on **DDD-code 210**. At [kamstrup.com](http://kamstrup.com) you find a selection of interactive user guides based on other DDD-codes.